



# Data Report

File Created Date: 13-Jul-16 10:14:10

Note: All times shown are based on UTC +03:00 and 24-Hour clock [DD-MMM-YY HH:MM:SS]

## Device Information

Serial Number: S116040241-15	Log Interval: 00H 05M 00S	Temperature Type: °C
Model Number: Customized	Start Mode: Start by button	
Version: V2.0	Start Delay: 00D 00H 00M 00S	

## Trip Information

Internal ID: 0000001  
Description: Temperature recording.

## Logging Summary

Highest Temperature: 53.9 °C	Record Mode: Stop record when full	Start Time: 13-Jun-16 10:29:10
Lowest Temperature: 18.4 °C	Stop Mode: Stop by button	Stop Time: 13-Jul-16 10:14:10
Average Temperature: 36.7 °C	Data Points: 8638	Elapsed Time: 29D 23H 45M 00S
MKT: 39.1 °C	Alarm At: 13-Jun-16 10:29:10	

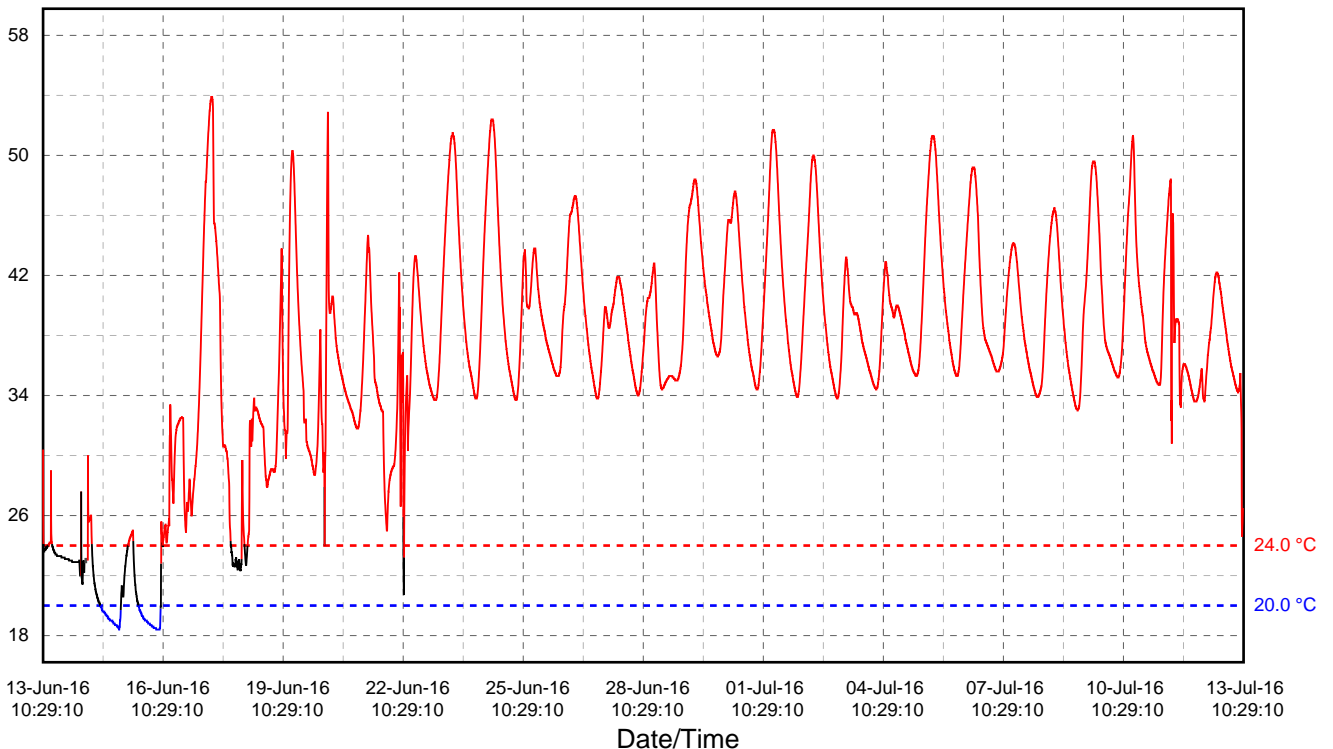
## Marked Events

N/A

Alarm Zone	Alarm Delay	Total Time	No. of Violations	Status
H: over 24.0 °C	00D 00H 00M 00S (Sin)	26D 23H 10M 00S	11	ALARM
L: below 20.0 °C	00D 00H 00M 00S (Sin)	01D 01H 20M 00S	3	ALARM

## Temperature[°C]

Normal: — Over: — Below: —  
Mark: — Mark: — No Data: .....





# Manufacturer's Certificate of Validation

<b>Certificate No.</b>	<b>Date</b>	<b>Page</b>
VC16040241-15	April 22,2016	1 of 1

imec Messtechnik GmbH certifies that the products mentioned on the following page(s) have been thoroughly tested,validated and met performance accuracy specifications over the stated ranges.

## Reference Instrumentation

Device	Model	Calibration Date	Accuracy/Volatility	Serial Number
Constant Temperature				
Trogh of Low Temperature	HC-2010	March 25,2016	± 0.05°C	JYDQ-135
Low-Temperature Check Equipment	ATL60	March 25,2016	± 0.015°C	JYDQ-136

All reference instruments are calibrated by SuZhou LonBo Calibration and Testing Co.,LTD, a CNAS (China National Accreditation Service) accredited laboratory, and traceable to NIST according to Multi-Recognition Agreement.

## Environment Conditions

<b>Air Temperature</b>
25.5°C
<b>Relative Humidity</b>
53.0%

## Validation Information

Validation Points	Tolerance	Result
+60°C	± 0.5°C	PASS
+40°C	± 0.5°C	PASS
+25°C	± 0.5°C	PASS
0°C	± 0.5°C	PASS
-5°C	± 0.5°C	PASS
-25°C	± 0.5°C	PASS

## Product Information

<b>Product Name</b>	<b>Serial Number</b>	<b>Production Date</b>	<b>Expiry Date</b>
tempmate®-S1 V2.0	S116040241-15	04/2016	04/2018

This certificate was automatically generated and valid without signature for 2 (two) years from date of production. V10/2015.

**imec Messtechnik GmbH**

Lilienthalstr. 23

T +49-7066-9150230

info@imec.de

74078 Heilbronn

F +49-7066-9150233

www.imec.de